



Beaufort Square, Colindale, NW9 5XF

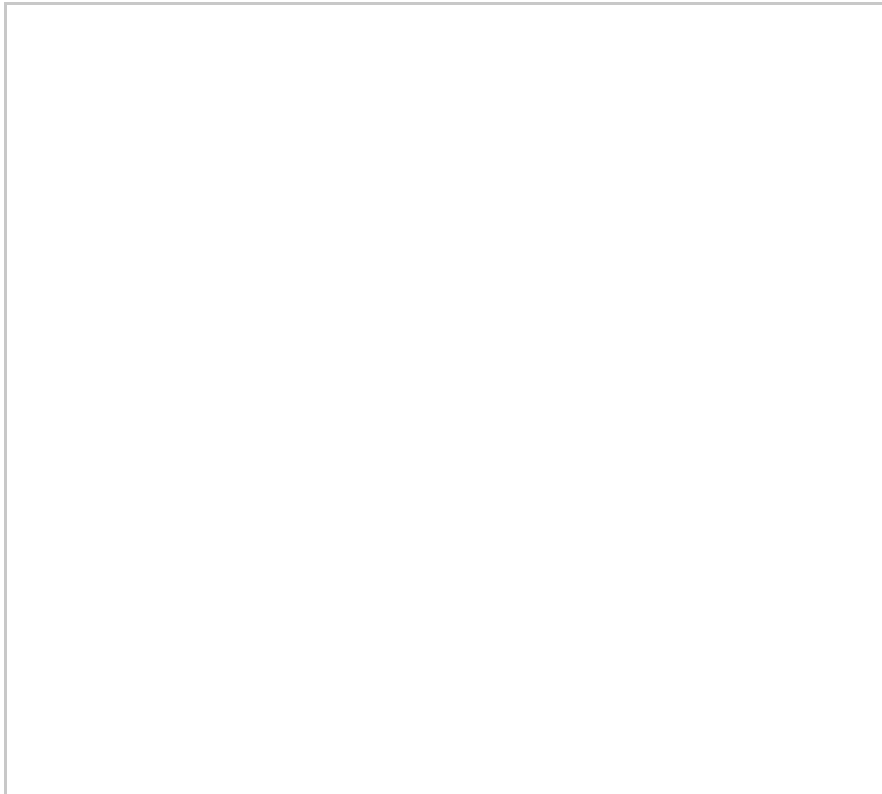
£1,650 Per Week -

One bedroom ground floor flat, overlooking the Beaufort Square garden, the flat offers a spacious reception room with the full upgrade, the open plan kitchen comes fully fitted and equipped with stone surfaces. Front terrace from reception room. Double bedroom with fitted wardrobe. Beautiful bathroom. The block benefits concierge and plenty of shops and restaurants. Close to Colindale Underground Station. Offered unfurnished and available 21st April

Deposit: £1,903.84
Council Tax Band C

- Modern development
- Ground floor
- Private terrace
- Council tax band C
- Gym & Spa included
- Concierge
- Available 21st April
- Unfurnished

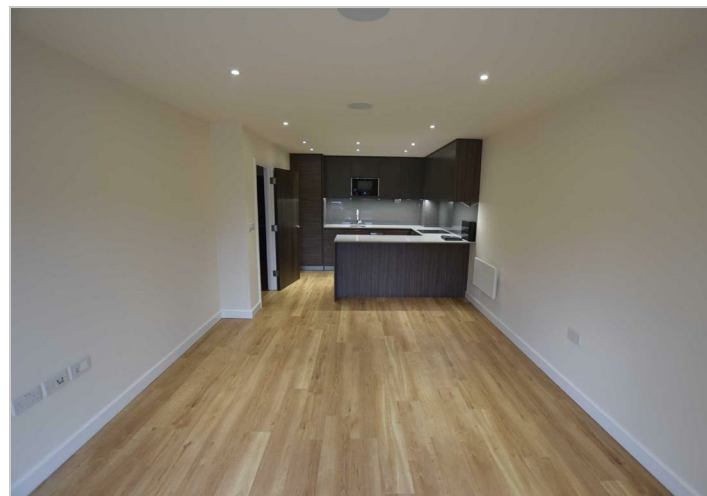
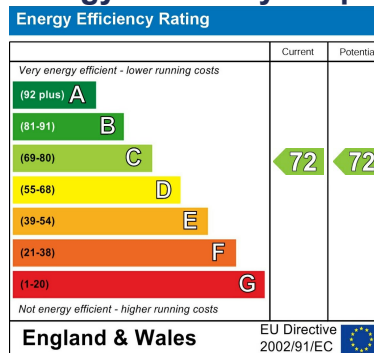
Floor Plan



Area Map



Energy Efficiency Graph



These particulars, whilst believed to be accurate are set out as a general outline only for guidance and do not constitute any part of an offer or contract. Intending purchasers should not rely on them as statements of representation of fact, but must satisfy themselves by inspection or otherwise as to their accuracy. No person in this firm's employment has the authority to make or give any representation or warranty in respect of the property.

Finchley Branch

181a Squires Lane,
Finchley,
London N3 2QS
Tel 020 8343 2111

Hendon Branch

16 Central Circus Parade,
Queens Road, Hendon,
London NW4 3AS
Tel 020 8202 0808

Mill Hill Branch

7 Thornfield Parade,
Holders Hill Road, Mill Hill,
London NW7 1LN
Tel 020 8349 3030

